

FOOT BATHS

Poly foot baths are the ultimate solution for containment of footrot treatment solutions.

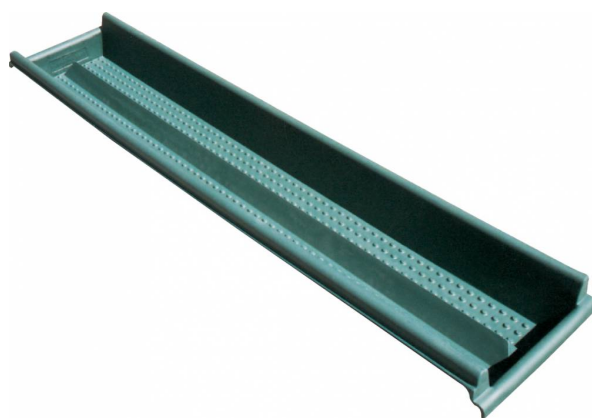
Available in both race type and standing type configurations, poly foot baths:

- Are lightweight for ease of handling.
- Will not rust, rot, chip or flake.
- Are UV stabilised - Base dimples open foot, ensuring penetration.
- Fully chemical resistant.
- Smooth, hygienic and easily cleaned.
- Have a specially designed non-slip floor.
- Can be linked end to end - may join any amount together.

Poly foot baths are the ultimate solution for containment of footrot treatment solutions.

Available in both race type and standing type configurations, poly foot baths:

- Are lightweight for ease of handling.
- Will not rust, rot, chip or flake.
- Are UV stabilised - Base dimples open foot, ensuring penetration.
- Fully chemical resistant.
- Smooth, hygienic and easily cleaned.
- Have a specially designed non-slip floor.
- Can be linked end to end - may join any amount together.



SPECIFICATIONS

Race type foot bath - 80 LTR

Code	RFRB
Capacity (Ltrs)	80
Length	2400mm
Width	480mm
Height	200mm

Standard type foot bath - 300 LTR

Code	FRB
Capacity (Ltrs)	300
Length	2530mm
Width	1000mm
Height	200mm